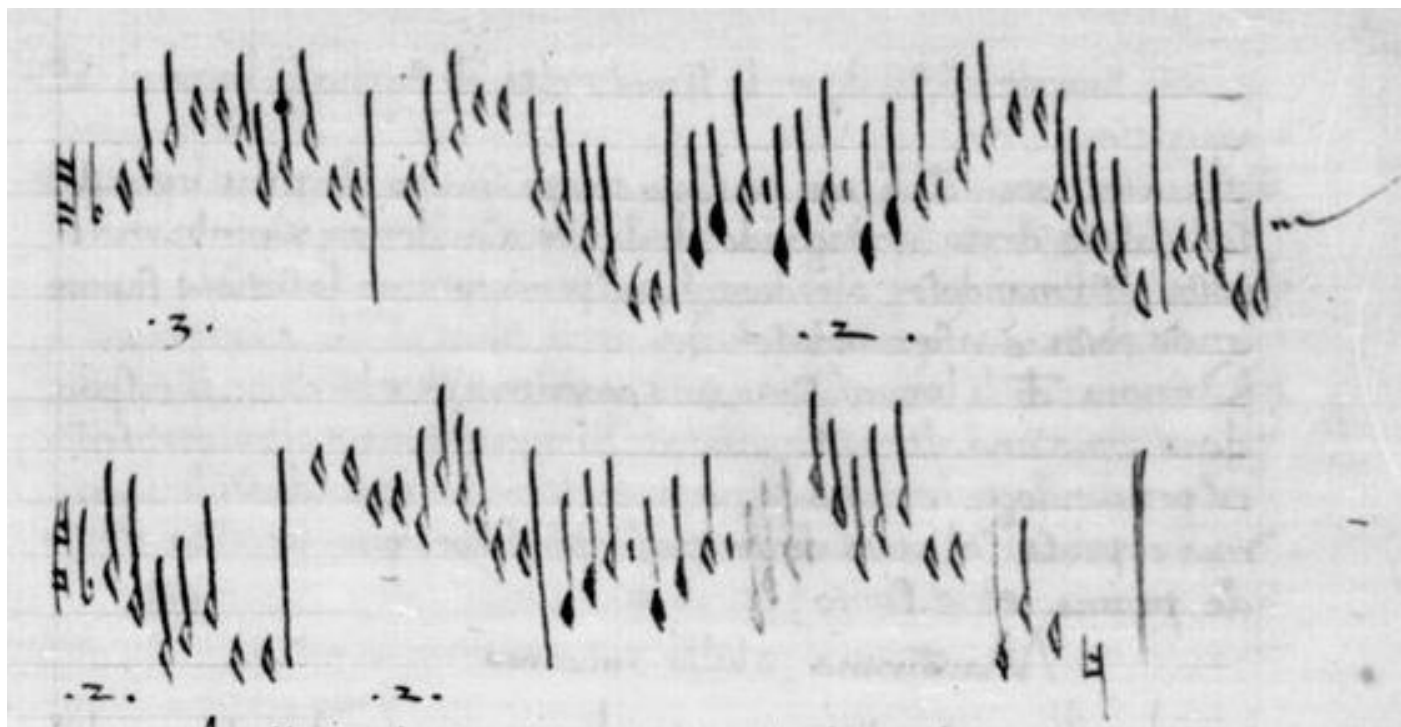


Original from Domenico da Piacenza:



Modern notation – transposed for pipe in D:

Anello Domenico da Piacenza
(c.1400 - c.1470)

(transposed for pipe in D)

7

12

18

24

1)

2)

A modern musical score for the piece 'Anello' by Domenico da Piacenza, transposed for a pipe in D. The score is written in a single staff with a treble clef, a key signature of two sharps (D major), and a 2/4 time signature. The music is divided into measures, with bar numbers 7, 12, 18, and 24 marked. The notation includes various rhythmic values, including eighth and sixteenth notes, and rests. There are two first endings marked '1)' and '2)' at the end of the piece. The score is presented in a clean, black-and-white format.